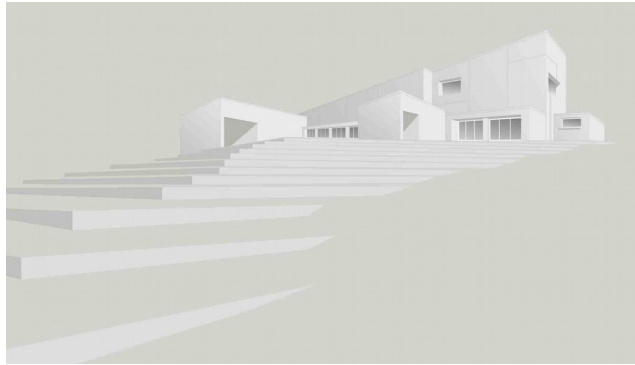


Technical Data Sheet

ADHCRETE WALLPUTTY

PRODUCT DESCRIPTION

Adhcrete wallputty is a high quality made of white cement, polymer, biocide,. Powder to be mixed with water at the time of application recommended for levelling uneven rough porous cement walls, plaster work, patching cracks and filling defective surfaces. With ease of application, it provides smooth finish for topcoat application. Wall Putty is recommended for both interior and exterior .



APPLICATION

It is recommended for use on all type of plaster and concrete

To make uneven surfaces to even and smooth surface

Advantages

1. Easy to apply
2. Antifungal
3. Water resistance
4. Decrease paint consumption
5. Smoothen the wall with excellent finish
6. Good compressive and tensile strength
7. Complies National and International Standard

Limitation

Do not directly apply on dust, oil, grease and loosely bond particles etc.

Do not apply on fungus or moss affected area.

Structure must be two coated cement sand smooth plaster, structurally sound and stable.

Pack Size Availability

1 Kg ,5 kg , 30 kg and 40 kg.

Coverage

Approx 18 to 20 sq ft per kg for 2 coats with maximum thickness 1.5mm

Caution

- Store in cool and dry place
- High humidity and moisture will affect product property
- Contains Portland cement and silica sand. May irritate eyes and skin. Avoid contact with eyes or prolonged contact with skin. In case of contact, flush thoroughly with water.
- Do not take internally. Silica sand may cause cancer or serious lung problems. Avoid breathing dust. Wear a respirator in dusty areas.
- Protect finished work from traffic or damage by other trades for an extended period of time during cold weather conditions. At room temperature conditions 70°F (20°C), protect overnight.
- Keep out of reach of children.

Technical Data and Application Properties*at 73⁰ F(23⁰C) and 50 % relative humidity

Shelf Life – 8 months (if it is stored in cool, dry place in original pack Water demand* – 6 to 7 litres for 20 kg powder Initial set -Approx*240 min Final Set*- Approx*390 min Pot Life*- Approx*3 to 4 hours Tensile Strength(28 days) - >1.2 mpa Compressive Strength(28 days)->8 mpa
--

* Specifications subject to change without prior notification and may not reflect immediately on TDS. Values shown in the table depends on laboratory condition and test procedure used .Actual field performance may vary on site condition and method of installation used. Company is not liable if failed to produce mentioned result in the site.

Installation

SURFACE PREPARATION

Surface must be clean, free from dust, grease, oil, heavy soot, chalk, mildew etc. Chalk joints and fill holes where necessary. All old loose, flaking or peeling paint must be removed.

MIXING

The standard mixing ratio is 300 to 350 gm water for 1 kg powder. Put clean water in the mixing container first, then add ADHCRETE Wallputty. For best result, mix with mixing paddle and 1/2" heavy –duty drill.. Mix with hand or slow speed mixer until its obtain a homogeneous lump free paste. Let the properly mixed putty to slake for 5 to 8 minutes. Remix again for 2 minutes and apply with the recommended putty blade.

Application procedure

Apply twp coat of paste on to the substrate with putty blade Check first coat fully cured or not before apply second coat Total thickness of the two coat is 1.5 mm

Cleaning equipment

While mortar is fresh clean the tile and tools with water.

Warranty

ADHCRETE CONSTRUCTION TECHNOLOGY INDIA PVT LTD warrants to the original purchaser of this product shall be free from defects and will not breakdown under normal usage for a period of one year from the date of manufacturing. Our sole liability under this warranty shall be limited to the replacement of purchased product if proved defect under normal handling as stated in TDS. This warranty will not extend to any other company product or items which were handled along with our product. This warranty or any other legal issues or claims subject to kundapura jurisdiction only.

Adhcrete Construction Technology India Pvt Ltd

Reg office –Sumukha Complex Uupunda-576232

Factory-Yaderi, Kalthodu village ,Kundapura-576219

Ph-08254-256760,

Website-www.adhcrete.com email-customer@adhcrete.com